



SEP

**THE INSTAGIRLS!**  
MODELS OF THE MOMENT  
IN THE CLOTHES OF THE SEASON

**856**

PAGES OF  
**SPECTACULAR  
FALL FASHION**

\$5.99US \$6.99FOR

09>

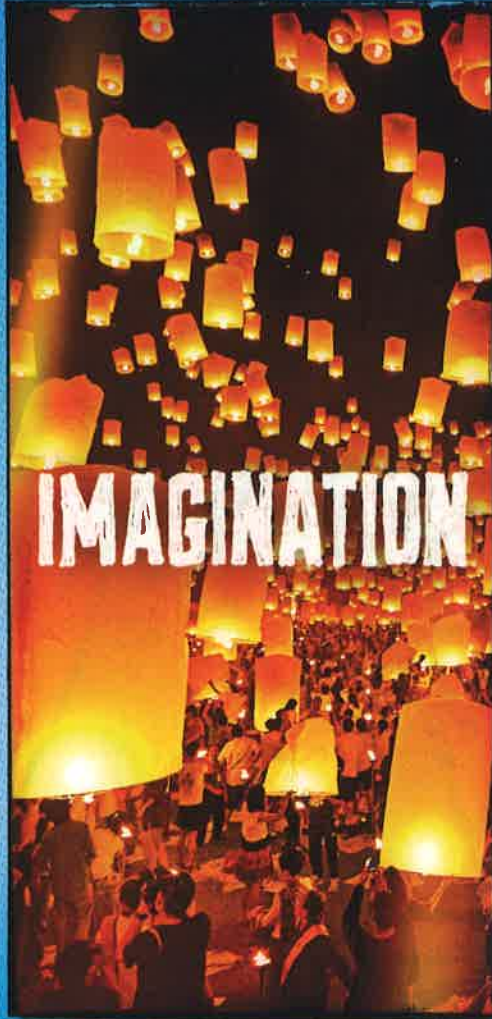


08446

CIGARETTES

©2014 R.J. REYNOLDS TOBACCO CO.

# CAMEL



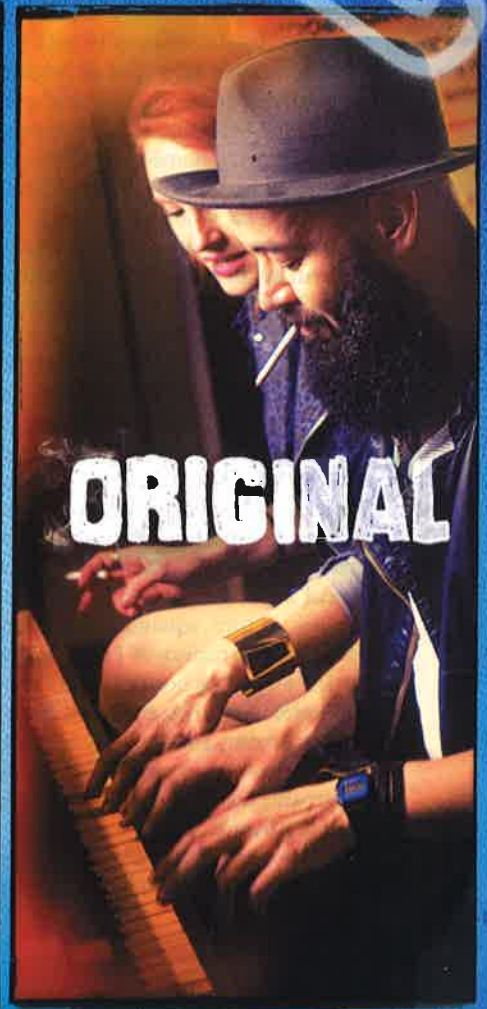
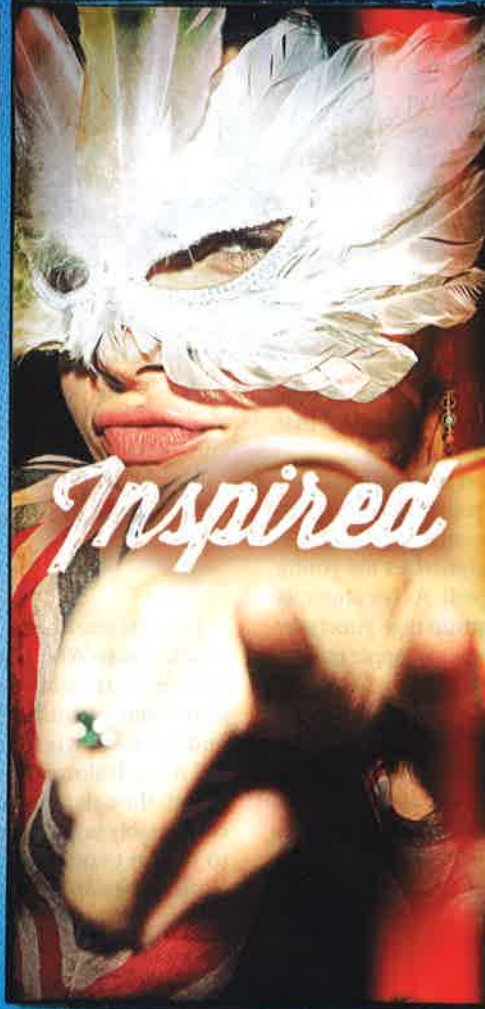
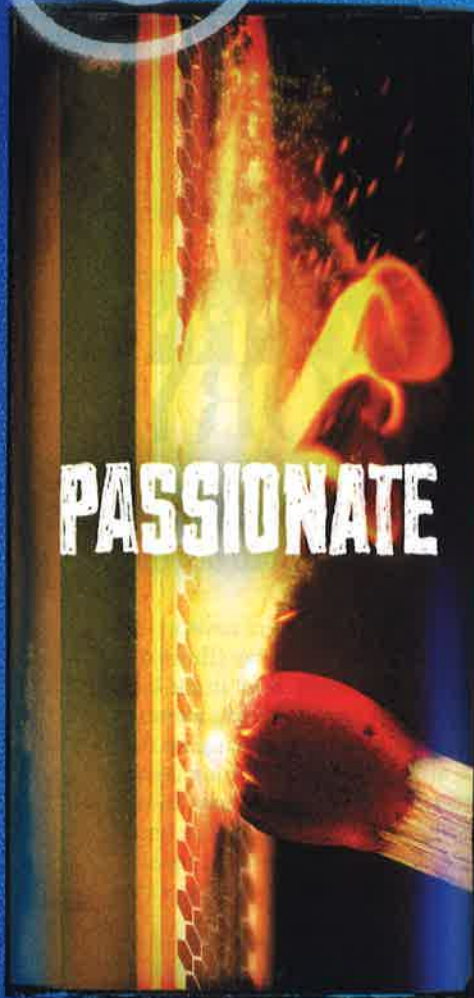
# TASTE IT ALL

**SURGEON GENERAL'S WARNING: Smoking Causes Lung Cancer, Heart Disease, Emphysema, And May Complicate Pregnancy.**

CIGARETTES

©2014 R.J. REYNOLDS TOBACCO CO.

# CAMEL



# TASTE IT ALL

SURGEON GENERAL'S WARNING: Smoking Causes Lung Cancer, Heart Disease, Emphysema, And May Complicate Pregnancy.



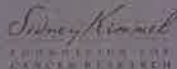
WHEN WE ALL  
COME TOGETHER  
CANCER DOESN'T STAND  
A CHANCE

FRIDAY, SEPT 5th  
8PM / 7 CENTRAL

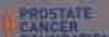
# THE STARS



# WILL ALIGN



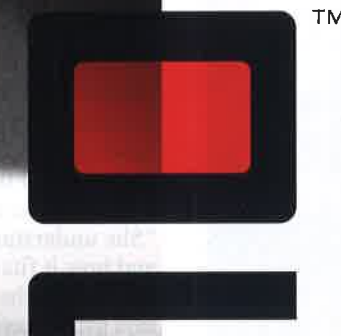
GO TO [STANDUP2CANCER.ORG](http://STANDUP2CANCER.ORG)



CANADIAN BREAST CANCER FOUNDATION, CANADIAN CANCER SOCIETY, CANADIAN INSTITUTES OF HEALTH RESEARCH, CANCER RESEARCH INSTITUTE, CANCER STEM CELL CONSORTIUM, FARRAH FAWCETT FOUNDATION, FIFTH THIRD BANK, FOX FAMILY CANCER RESEARCH FUNDING TRUST, GENOME CANADA, LAURA ZISKIN FAMILY TRUST, LUSTGARTEN FOUNDATION, MELANOMA RESEARCH ALLIANCE, NATIONAL OVARIAN CANCER COALITION, ONTARIO INSTITUTE FOR CANCER RESEARCH, OVARIAN CANCER NATIONAL ALLIANCE, OVARIAN CANCER RESEARCH FUND, ROOMKEY.COM, SEAN PARKER FOUNDATION, SIEMENS, ST. BALDRICK'S FOUNDATION

STAND UP TO CANCER IS A PROGRAM OF THE ENTERTAINMENT INDUSTRY FOUNDATION (EIF), A 501(C)(3) CHARITABLE ORGANIZATION. IMAGES FROM THE STAND UP TO CANCER 2012 SHOW. THE AMERICAN ASSOCIATION FOR CANCER RESEARCH (AACR) IS STAND UP TO CANCER'S SCIENTIFIC PARTNER.

MARKTEN<sup>®</sup>  
e-vapor



A full draw by design.

Let It Glow.<sup>™</sup>



The only e-vapor with **FourDraw<sup>®</sup>**  
technology for a full draw.

Available in **Classic** and **Menthol**. Look for it in select markets.

MARKTEN, FOURDRAW, LET IT GLOW and related design marks are trademarks of Nu Mark LLC. © 2014 Nu Mark LLC BK606

**WARNING:** This product is not intended for use by women who are pregnant or breast feeding, or persons with or at risk of heart disease, high blood pressure, diabetes, or taking medicine for depression or asthma. Nicotine is addictive and habit forming, and it is very toxic by inhalation. Nicotine can increase your heart rate and blood pressure and cause dizziness, nausea, and stomach pain. Inhalation of this product may aggravate existing respiratory conditions.