

David P. Bradley (Chippewa, born 1954)

American Indian Gothic

1983, lithograph, 30 x 22 inches

Heard Museum, Gift of Damaris D. W. Ethridge

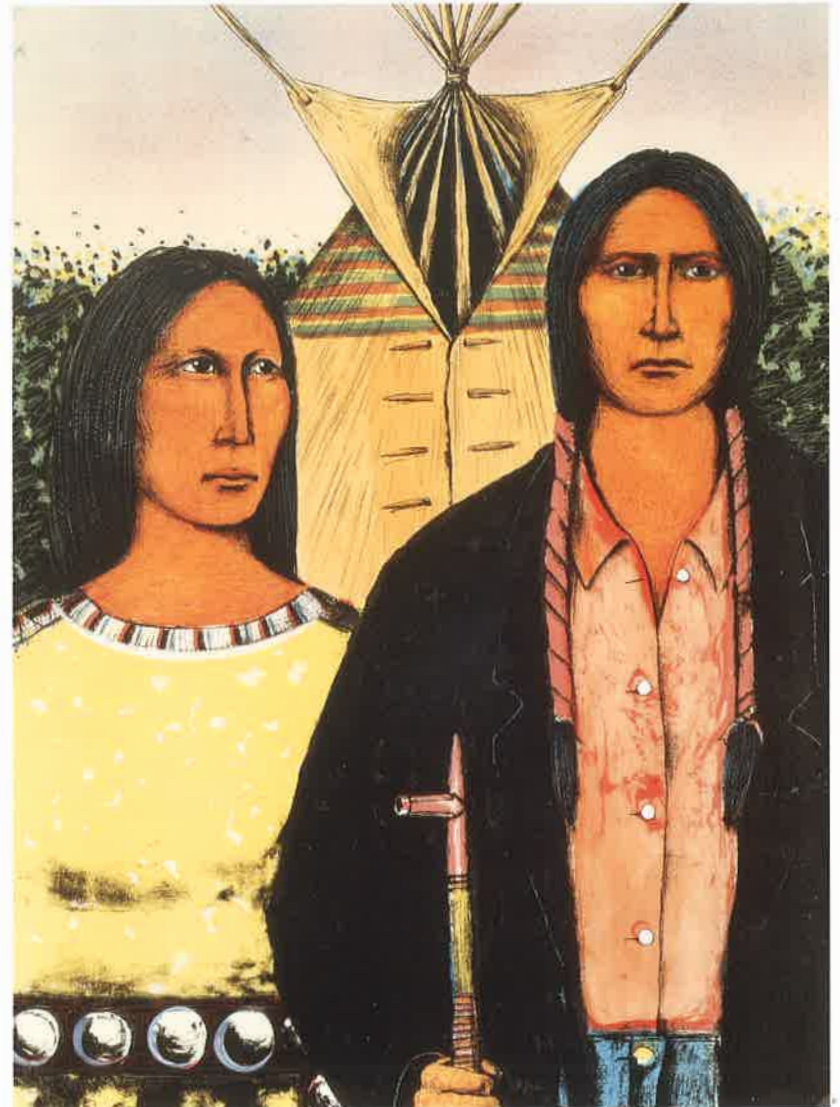


MARSH ART GALLERY
UNIVERSITY OF RICHMOND MUSEUMS

University of Richmond, Virginia 23173

Lithograph © David P. Bradley

Printed © 1999 University of Richmond Museums, Virginia 23173



Organized by the Heard Museum, Phoenix, Arizona, this is the exclusive East Coast venue of an evocative exhibition that challenges stereotypes of contemporary Native American art. Celebrating the creativity of indigenous artists of North America, the exhibition draws from the works featured in the Heard Museum's seven Invitational exhibitions held from 1983 through 1997. The exhibition includes paintings, sculpture, prints, and mixed media pieces by forty-eight contemporary Native Americans, and the works reflect the artists' search for cultural identity in the face of assimilation and their struggle of living in two worlds – their own native culture and today's American society – and examines the complex duality of Native American life in the modern world.

The exhibition is sponsored by



The exhibition will remain on view through March 3, 2000.

Museum hours: Tuesday through Sunday, 1 to 5 p.m.

Call (804) 289-8276 for information and directions.

www.arts.richmond.edu/~marshart

Lecture in conjunction with the exhibition:

Challenging Perceptions: The Native American Fine Art Invitational

Margaret Archeleta, Curator of Fine Art, Heard Museum,

and curator of the exhibition

Wednesday, January 26, 7:30 p.m., Frederick Rehearsal Hall,

George M. Modlin Center for the Arts

The Marsh Art Gallery,
University of Richmond Museums,
cordially invites you
to the preview and opening reception
for the exhibition

Art in **2** Worlds

The Native American Fine Art Invitational 1983-1997

Wednesday evening, January 19, 2000,

from six to eight o'clock,

Booth Lobby, Marsh Art Gallery,

George M. Modlin Center for the Arts

Art in 2 Worlds

The Native American Fine Art
Invitational 1983-1997



 **Heard Museum**
Phoenix, Arizona

PHILIP MORRIS
COMPANIES INC.

The Marsh Art Gallery, University of Richmond Museums, cordially invites you to the preview and opening reception for the exhibition



Art in ² Worlds

The Native American Fine Art Invitational 1983–1997

Wednesday evening, January 19, 2000

from six to eight o'clock

Booth Lobby, Marsh Art Gallery

George M. Modlin Center for the Arts

University of Richmond

Lecture in conjunction with the exhibition:

Challenging Perceptions: The Native American Fine Art Invitational

Margaret Archuleta, Curator of Fine Art, Heard Museum,

and curator of the exhibition

Wednesday, January 26, 7:30 pm, Frederick Rehearsal Hall,

George M. Modlin Center for the Arts

The exhibition will remain on view through March 3, 2000.

Museum hours: Tuesday through Sunday, 1 to 5 pm.

Call (804) 289-8276 for information and directions.

www.arts.richmond.edu/~marshart

Sponsored by

PHILIP MORRIS
COMPANIES INC.

Kevin Locke,

Lakota dancer

and musician

performing

January 19

at 8 pm. Limited

tickets available.

